

Manufactured Home For Sale In Southern, Oregon
email@rivervalley-homes.com



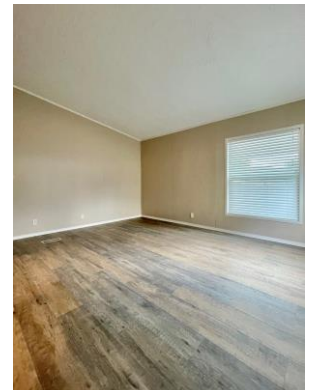
Price: \$135,000
Community: Covered Bridge MHP
Address of Home:
8965 E Evans Creek RD, #22
Rogue River, Oregon 97537
Lot Rent: \$500
Est. Annual Property Tax: \$498

Heat: Electric, Central
Status: Active
Exterior Color: Blue
Builder: Redman
Year: 1994
Size: 27' x 52' **Sq. Ft.** 1,404
Bed Rooms: 3 **Bath Rooms:** 2

Beautifully Remodeled Move-in Ready
Very Desirable 55+ Community
Price Reduced \$135,000



Professionally remodeled home, located in the beautiful Evans Valley. This very nice 3 bedroom 2 full bathroom home has many upgrades, including all new flooring, new window treatments, new toilets, shower, and more. Also fresh paint inside and out with a bright kitchen with a new range, new dishwasher, microwave and refrigerator. You will have a large covered deck, storage building, carport and plenty room for parking. You will have a yard with room for a garden or a small dog. This community is only about 10 miles from shopping, restaurants, and medical services in the town of Rogue River. You will also be less than 25 minutes From Grants Pass. Your water and sewer utilities are included with your space rent of only \$500 per month. For more information or to schedule a viewing call River Valley Homes today.



www.RiverValley-Homes.com

541-951-0588
email@rivervalley-homes.com